



# Universidade de Brasília

## Repositório Institucional da Universidade de Brasília

*repositorio.unb.br*



**Este artigo** está licenciado sob uma licença Creative Commons Atribuição-NãoComercial 4.0 Internacional.

### **Você tem direito de:**

Compartilhar — copiar e redistribuir o material em qualquer suporte ou formato.

Adaptar — remixar, transformar, e criar a partir do material.

### **De acordo com os termos seguintes:**

Atribuição — Você deve dar o **crédito apropriado**, prover um link para a licença e **indicar se mudanças foram feitas**. Você deve fazê-lo em qualquer circunstância razoável, mas de maneira alguma que sugira ao licenciante a apoiar você ou o seu uso

Não Comercial — Você não pode usar o material para **fins comerciais**.

**Sem restrições adicionais** — Você não pode aplicar termos jurídicos ou **medidas de caráter tecnológico** que restrinjam legalmente outros de fazerem algo que a licença permita.



**This article** is licensed under a Creative Commons Attribution-NonCommercial 4.0 International License.

### **You are free to:**

Share — copy and redistribute the material in any medium or format.

Adapt — remix, transform, and build upon the material.

### **Under the following terms:**

Attribution — You must give **appropriate credit**, provide a link to the license, and **indicate if changes were made**. You may do so in any reasonable manner, but not in any way that suggests the licensor endorses you or your use.

NonCommercial — You may not use the material for **commercial purposes**.

**No additional restrictions** — You may not apply legal terms or technological measures that legally restrict others from doing anything the license permits.

Esta licença está disponível em: <https://creativecommons.org/licenses/by-nc/4.0/>

## Note

## First record of damage by an insect pest in a commercial amaranth crop in Brazil

Charles Martins de Oliveira<sup>1\*</sup>, Walter Quadros Ribeiro Júnior<sup>1</sup>, Amabilio José Aires de Camargo<sup>1</sup>, Marina Regina Frizzas<sup>2</sup>

<sup>1</sup>Embrapa Cerrados, Rod. BR 020, km 18, C.P. 08223 – 73310-970 – Planaltina, DF – Brasil.

<sup>2</sup>UnB/Instituto de Ciências Biológicas – Depto. de Zoologia – 70910-900 – Brasília, DF – Brasil.

\*Corresponding author <charles@cpac.embrapa.br>

Edited by: Richard V. Glatz

Received February 10, 2011

Accepted January 19, 2012

**ABSTRACT:** Insect pests have not been recorded for amaranth (*Amaranthus cruentus* L.) in Brazil. Generalized plant lodging was observed after the grain-filling period in an irrigated commercial amaranth crop (7 ha), located in Cristalina, state of Goiás (Brazil), which was cultivated between Aug. and Dec. 2009. Almost all sampled plants presented internal galleries bored by lepidopteran larvae. The larvae were reared, and the adults were identified as *Herpetogramma bipunctalis* (F.) (Crambidae). This is the first report of an insect pest causing significant damage in a commercial amaranth crop in Brazil, which indicates the need to develop pest management strategies in order to support the increased production in Brazil.

**Keywords:** *Herpetogramma bipunctalis*, *Amaranthus*, Lepidoptera, Crambidae, "Cerrado"

## Introduction

The genus *Amaranthus* L. (Amaranthaceae) comprises approximately 70 species, 50 of these native to the Americas (Kigel, 1994; Mosyakin and Robertson, 2003; Troiani et al., 2004). Currently, the species *A. hypochondriacus* L., *A. cruentus* L. and *A. caudatus* L., which have been domesticated for grain production, have economic importance (Spehar et al., 2003; Trucco and Tranel, 2011) and are commercially cultivated in different geographical areas such as the Americas, China, southern Europe, Russia and western Asia (Stallknecht and Schulz-Schaeffer, 1993). These species are considered functional foods because their grains have high protein levels compared with traditional crops, ranging from 12.8 to 17.4 %, and amino acids, mainly lysine and sulfur amino acids, which are found at low levels in other cereals (Bressani et al., 1987; Brenner et al., 2000). *Amaranthus* spp. crops have quick establishment, drought tolerance, high biomass production, nutrient cycling, and resistance to pests and diseases; additionally, they can be used as human food and animal feed (Spehar, 1998; Spehar and Lara Cabezas, 2001). In Brazil, only the species *A. cruentus* is cultivated in small areas for grain production (Spehar et al., 2003).

The species *Herpetogramma bipunctalis* (F.) (Lepidoptera: Crambidae) is considered a pest of the *Amaranthus* spp. (Tingle et al., 1978; Agunloye and Osisanya, 1985; Clarke-Harris et al., 1998; Salas-Araiza and Boradonenko, 2006) and it presents a wide tropical distribution (Allyson, 1984). It has also been recorded the infestation of a wide range of other dicotyledonous plant species, e.g., *Brassica* sp., *Capsicum* sp., *Solanum nigrum* L., and *Piper aduncum* L., as well as monocotyledonous plants, e.g., *Xanthosoma* spp. and *Asparagus* sp. (Allyson, 1984; Solis, 2006). In several countries, such as Jamaica, United States, Mexico and Venezuela, at least 26 species of arthropod pests of amaranth are registered (Sweetman, 1928; Allyson, 1984; Bautista-Martínez et al.,

1997; Clarke-Harris et al., 1998; Solis, 2006; Torres et al., 2011); however, there are no records of damage by pests in Brazil.

This study aimed to record, for the first time in Brazil, the occurrence of an insect pest in a commercial amaranth (*A. cruentus*) crop.

## Materials and Methods

Between Aug. and Dec. 2009, amaranth plants, in the grain-filling period, presented lodging or breaks in the middle or the lower one-third of the stem in a commercial field of *A. cruentus*, with an area of around 7 ha, located at Cristalina, state of Goiás, Brazil (16°16'54" S; 47°26'57" W; 936 m). At harvest, ten random transects of plants were established (each five meters in length and with approximate area of 18 m<sup>2</sup>) and used to evaluate the percentage of plants exhibiting a snapped stem due to damage by insect pest. Ten samples (with 100 plants each sample) also were taken randomly in the area to estimate the percentage of the presence of galleries in the plant stem. Symptomatic plant samples were collected. The stems were longitudinally sectioned and were examined by direct visualization. Lepidopteran larvae were observed inside the stems. Larvae were collected and stored in glass pots (10 cm height; 11 cm diameter), covered with a metal screen (0.68 mm openings). A thin layer of sterilized soil and small sections of amaranth stem were placed inside the pots to allow the insects to complete their development. The pots were kept in a growth chamber under controlled conditions [25 ± 2 °C, 70 ± 23 % relative humidity, and 12 h photophase]. Adults were obtained after approximately 11 days. The specimens were killed and mounted on entomological pins for specific taxonomic identification (Figure 1).

The insects were identified as belonging to the species *H. bipunctalis* in accordance with the adult descriptions reported by Clarke-Harris et al. (1998) and Solis (2010); and by morphological and genitalia (Figure 2)

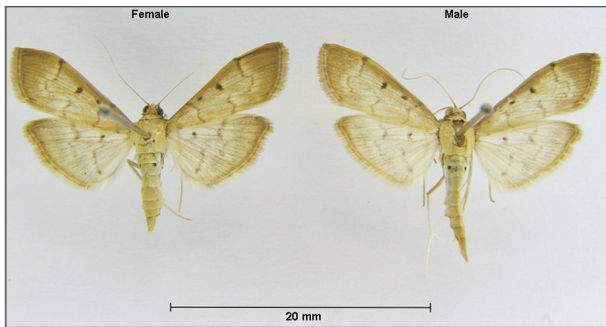


Figure 1 – *Herpetogramma bipunctalis* adults reared from amaranth plants collected in Nov. 2009 in Cristalina, state of Goiás, Brazil.

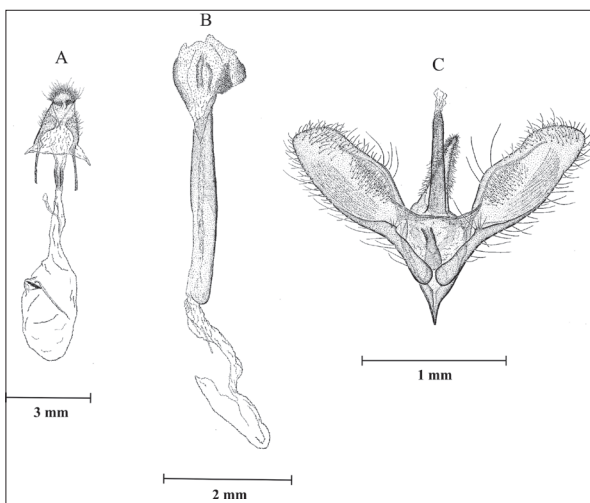


Figure 2 – Morphological features of *Herpetogramma bipunctalis* used for classification of adults reared from amaranth plants collected in Nov. 2009 in Cristalina, state of Goiás, Brazil: A. Female genitalia (ventral view); B. Aedeagus (lateral view); C. Male genitalia (ventral view).

comparison with specimens stored at the Entomological Collection of Embrapa Cerrados (Center for Agricultural Research on the Savannas – CPAC). The specimens of *H. bipunctalis* analyzed had low intraspecific morphological variation. The studied insect vouchers (five specimens) are stored as part of the Entomological Collection of Embrapa Cerrados (CPAC) (collection code: CPAC 12577).

### Results and Discussion

All plants examined in the laboratory presented galleries up to 5 mm in diameter throughout the main stems (Figure 3). The galleries had occasional interruptions, dark coloration, and the presence of chewed plant material mixed with feces of *H. bipunctalis* larvae. Outside, at points that coincided with the larger diameter portions of the internal galleries, we observed the presence of small, circular or oval holes of approximately 1.5 mm (Figure 4). They were probably exit holes of the



Figure 3 – Galleries bored by *Herpetogramma bipunctalis* inside the stems of *Amaranthus cruentus* collected in Nov. 2009 in Cristalina, state of Goiás, Brazil.

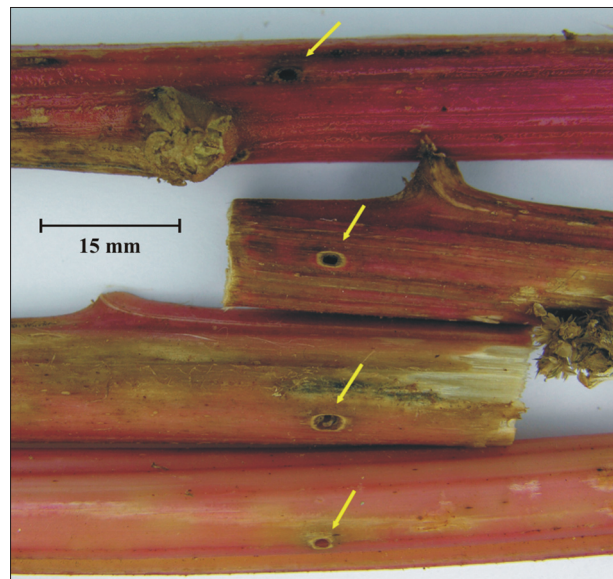


Figure 4 – Exit holes (arrows) bored by *Herpetogramma bipunctalis* in the stems of *Amaranthus cruentus* collected in Nov. 2009 in Cristalina, state of Goiás, Brazil.

last instar larvae, which subsequently passed the pupal stage in the soil, as observed in the rearing pots kept in the laboratory. This is consistent with reports from amaranth crops in Mexico where the pupae were observed in the soil nearby host plants (Torres et al., 2011).

In each stem, in separate galleries, were observed a variable number of larvae of *H. bipunctalis* at different stages of development, indicating that several specimens can infest and develop within the plant. In the field, there was lodging or the presence of plants with a snapped stem, in approximately 80 % of the crop area. When harvested samples were examined, there were very few that did not show evidence of larval galleries due to *H. bipunctalis* (Figure 5).



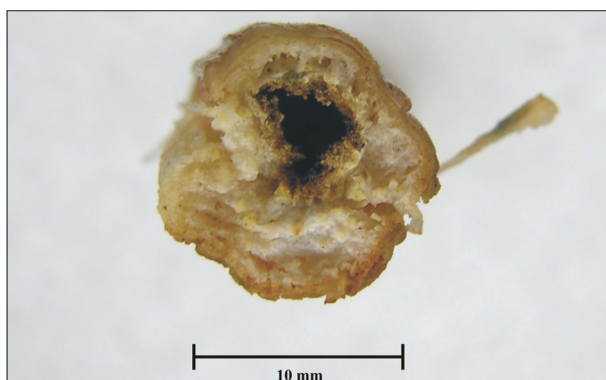


Figure 5 – Black circular region indicating the existence a gallery bored by *Herpetogramma bipunctalis* in the stems of *Amaranthus cruentus* collected in Nov. 2009 in Cristalina, state of Goiás, Brazil.

*Herpetogramma bipunctalis* larvae have been observed feeding on several plant species (Tingle et al., 1978; Allyson, 1984; Agunloye and Osisanya, 1985; Clarke-Harris et al., 1998; Solis, 2006). In Mexico, this species was observed feeding on leaves and grains of *Amaranthus* spp. plants (Torres et al., 2011) as well as boring and building galleries inside the plant stems (Vejar-Cota et al., 1994; Torres et al., 2011) as observed in this study.

The few studies of amaranth in Brazil have not registered the presence of economically important pests (Spehar et al., 2003; Teixeira et al., 2003). Amaranth has only recently become a commercial crop in Brazil, and the planted area is still relatively small. However, the increased consumption of pseudocereals, whether for food, animal feed, or as an off-season crop, will cause an increase in the planted area. This first record of serious damage caused by *H. bipunctalis* in the commercial amaranth crop in Central Brazil indicates the need for development of management strategies for this species as a way to allow the expansion of crop cultivation in Brazil.

### Acknowledgments

To Sebastião Conrado de Andrade (Dom Bosco farm- Cristalina/GO), for allowing us to collect amaranth plants on his property; to Wellington Cavalcanti, for genitalia drawings, and to Janio Fonseca Silva, for rearing of the *Herpetogramma bipunctalis* larvae.

### References

Agunloye, O.; Osisanya, E.O. 1985. Pirimiphos-methyl in the control of *Psara bipunctalis* F. on *Amaranthus cruentus* in Southern Nigeria. *International Journal of Pest Management* 31: 196–198.

Allyson, S. 1984. Description of last-instar larvae of 22 species of North American Spilomelini (Lepidoptera: Pyralidae: Pyraustinae) with a key to species. *Canadian Entomologist* 116: 1301–1334.

Bautista, M.N.; Vejar, C.G.; Van Tschirnhaus, M. 1997. First record of the amaranth borer fly *Amauromyza abnormalis* (Malloch) (Diptera: Agromyzidae) in Mexico. *Southwestern Entomologist* 22: 461–463.

Brenner, D.M.; Baltensperger, D.D.; Kulakow, P.A.; Lehmann, J.W.; Myers, L.R.; Slabbert, M. 2000. Genetic Resources and Breeding of *Amaranthus*. Iowa Agriculture and Home Economics Experiment, Ames, IA, USA. (Journal Paper, J-18413).

Bressani, R.; Gonzáles, J.M.; Zuniga, J.; Brauner, M.; Elias, L.G. 1987. Yield, selected chemical composition and nutritive value of 14 selections of amaranth grain representing four species. *Journal of the Science of Food and Agriculture* 38: 347–356.

Clarke-Harris, D.; Fleischer, S.J.; Fender, A. 1998. Identification Guide: Major Pests of Callaloo. Pennsylvania State University. University Park, PA, USA.

Kigel, J. 1994. Development and ecophysiology of amaranths. p. 39–73. In: Paredes-López, O., ed. *Amaranth: biology, chemistry, and technology*. CRC Press, Boca Raton, FL, USA.

Mosyakin, S.L.; Robertson, K.R. 2003. *Amaranthus*. p. 410–435. In: *Flora of North America Editorial Committee, ed. Flora of North America: North of Mexico*. Oxford University Press, New York, USA.

Salas-Araiza, M.D.; Boradonenko, A. 2006. Insects associated with amaranth *Amaranthus hypocondriacus* L. (Amaranthaceae) in Irapuato, Guanajuato, Mexico. *Acta Universitaria* 16: 50–55 (in Spanish, with abstract in English).

Spehar, C.R. 1998. Production systems in the savannas of Brazil: key factors to sustainability. p. 301–318. In: Lal, R., ed. *Soil quality and agricultural sustainability*. Ann Arbor Press, Chelsea, MI, USA.

Spehar, C.R.; Lara Cabezas, W.A.R. 2001. Introduction and selection of species for the diversification of the production system in the Cerrados. p. 179–188. In: Lara Cabezas, W.A.R.; Freitas, P.L., eds. *No-tillage in the integrated cattle raising-crop production system*. UFU, Uberlândia, MG, Brazil (in Portuguese).

Spehar, C.R.; Teixeira, D.L.; Lara Cabezas, W.A.R.; Erasmo, E.A.L. 2003. Amaranth BRS Alegria: alternative for diversification of cropping systems. *Pesquisa Agropecuária Brasileira* 38: 659–663 (in Portuguese, with abstract in English).

Solis, M.A. 2006. Key to Selected Pyraloidea (Lepidoptera) Larvae Intercepted at U.S. Ports of Entry: Revision of Pyraloidea in "Keys to Some Frequently Intercepted Lepidopterous Larvae" by Weisman 1986. University of Nebraska, Lincoln, NE, USA.

Solis, M.A. 2010. North American *Herpetogramma* Lederer, 1863 (Lepidoptera: Crambidae: Spilomelinae): type specimens and identity of species in the United States and Canada. *Proceedings of the Entomological Society of Washington* 112: 451–463.

Stallknecht, G.F.; Schulz-Schaeffer, J.R. 1993. Amaranth rediscovered. p. 211–218. In: Janick, J.; Simon, J.E., eds. *New crops*. Wiley, New York, NY, USA.

Sweetman, H.L. 1928. Notes on insects inhabiting the roots of weeds. *Annals of the Entomological Society of America* 21: 594–600.

Teixeira, D.L.; Spehar, C.R.; Souza, L.A.C. 2003. Agronomic characterization of amaranth for cultivation in the Brazilian Savannah. *Pesquisa Agropecuária Brasileira* 38: 45–51 (in Portuguese, with abstract in English).

- Tingle, F.C.; Ashley, T.R.; Mitchell, E.R. 1978. Parasites of *Spodoptera exigua*, *S. eridania* (Lepidoptera: Noctuidae) and *Herpetogramma bipunctalis* (Lepidoptera: Pyralidae) collected from *Amaranthus hybridus* in field corn. *BioControl* 23: 343- 347.
- Torres, B.C.P.; García, A.A.; Avilés, R.P.; Hernández, L.R.; Olguín, J.F.L. 2011. Entomofaunistic study in of the cultivation of amaranth (*Amaranthus hypochondriacus* L.) in Puebla, Mexico. *Revista Mexicana de Ciencias Agrícolas* 2: 359-371 (in Spanish and English).
- Troiani, R.M.; Sánchez, T.M.; Reinaudi, N.B.; Ferramola, L.A. 2004. Optimal sowing dates of three species of grain-bearing amaranth in the semi-arid Argentine Pampa. *Spanish Journal of Agricultural Research* 2: 385-391.
- Trucco, F.; Tranel, P.J. 2011. *Amaranthus*. p. 11-22. In: Kole, C., ed. Wild crop relatives: genomic and breeding resources, vegetables. Springer-Verlag, Berlin, Germany.
- Vejar-Cota, V.; Bautista-Martínez, N.; Carrillo-Sánchez, J.L. 1994. The pests of amaranth (*Amaranthus* spp.) in the Central region of Mexico. p. 46-47. In: *Avances de investigación*. Instituto de Fitosanidad/Colegio de Posgraduados, Montecillo, México (in Spanish).