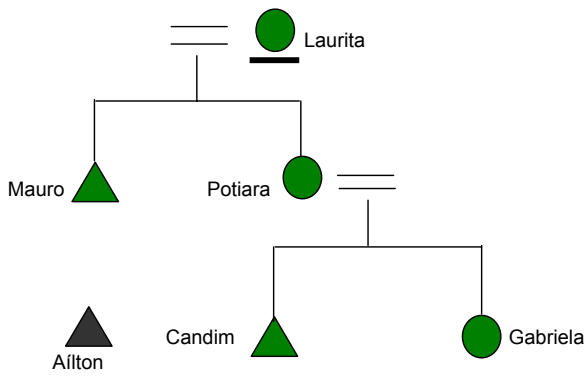
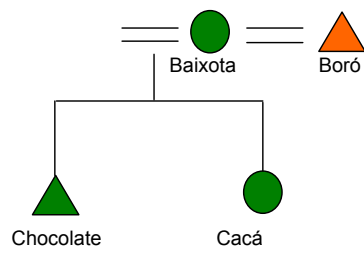


Diagramas de Parentesco relacionado à moradia

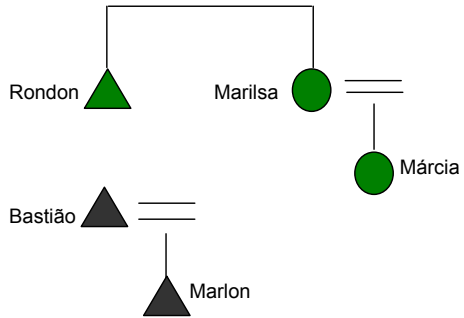
Casa 1



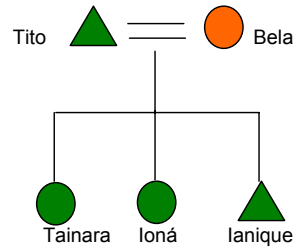
Casa 2



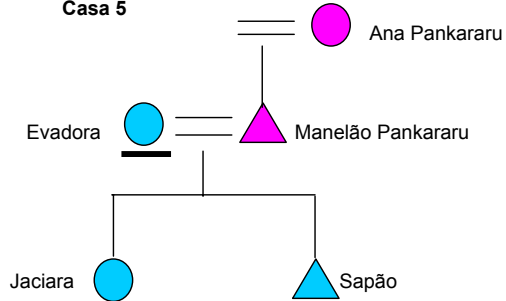
Casa 3



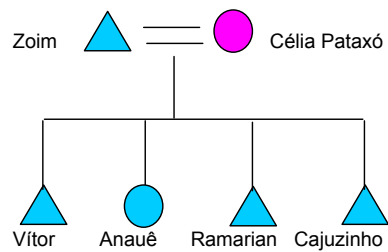
Casa 4



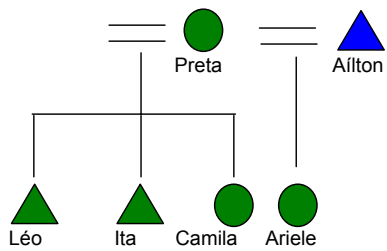
Casa 5



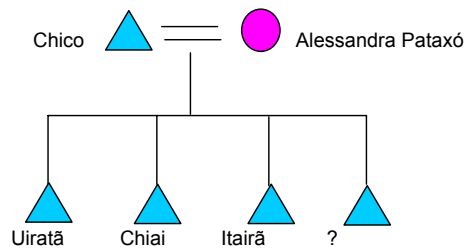
Casa 6



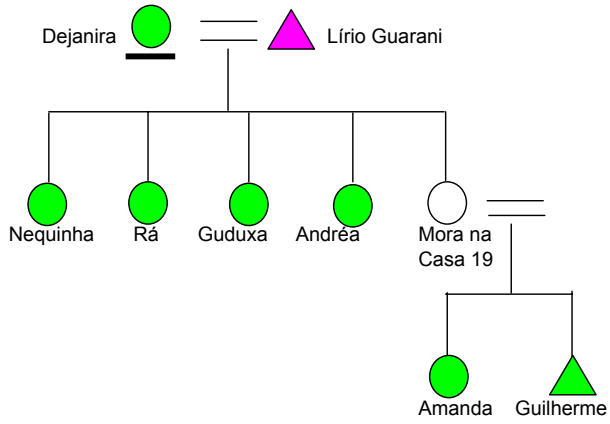
Casa 7



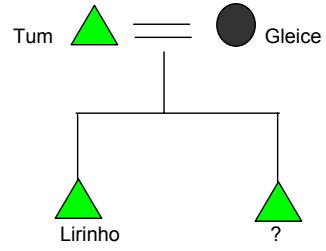
Casa 8



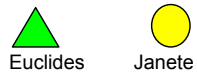
Casa 9



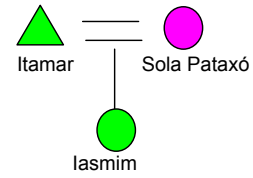
Casa 10



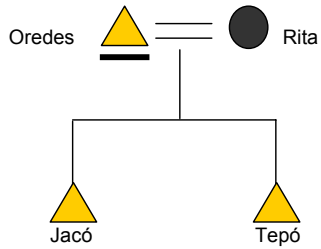
Casa 11



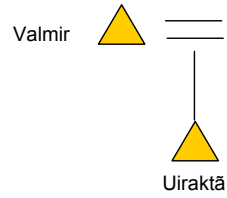
Casa 12



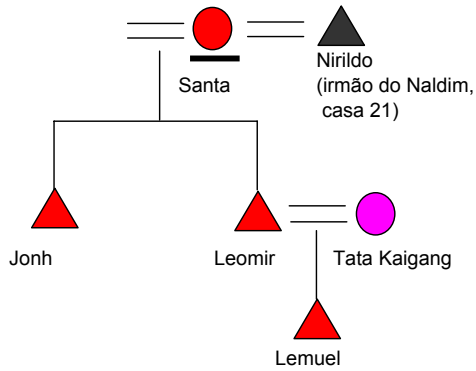
Casa 13



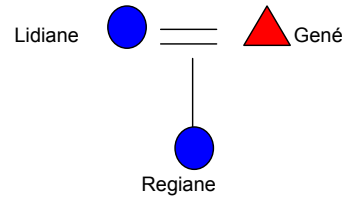
Casa 14



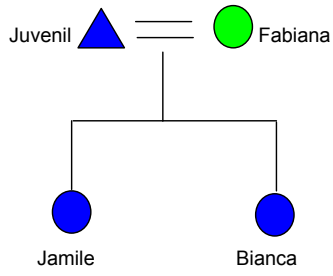
Casa 15



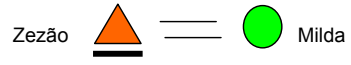
Casa 16



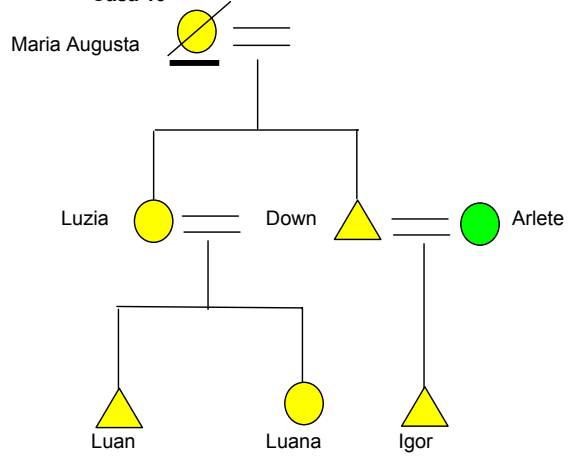
Casa 17



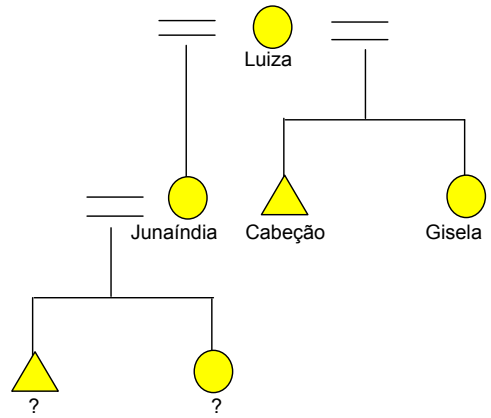
Casa 18



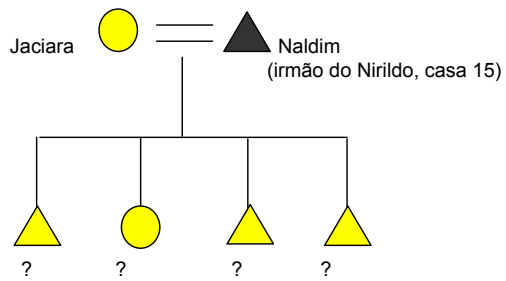
Casa 19



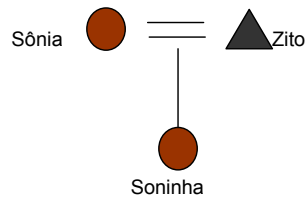
Casa 20



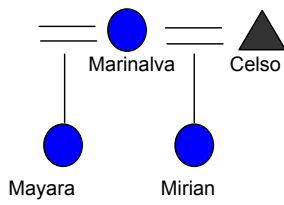
Casa 21



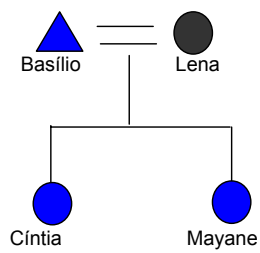
Casa 22



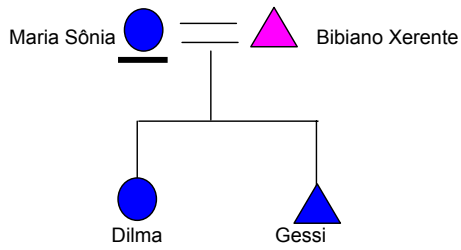
Casa 23



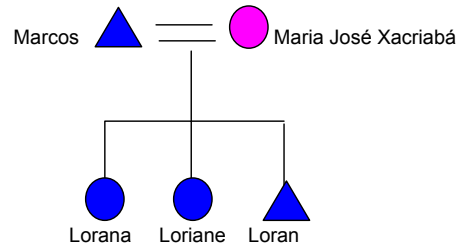
Casa 24



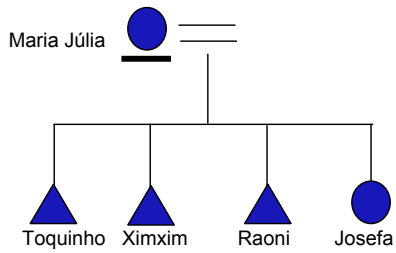
Casa 25



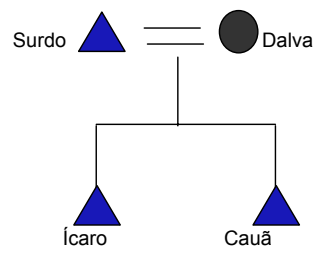
Casa 26



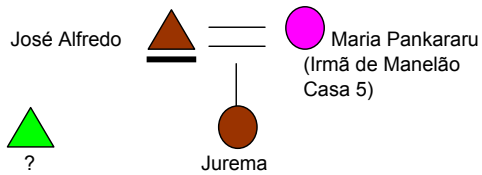
Casa 27



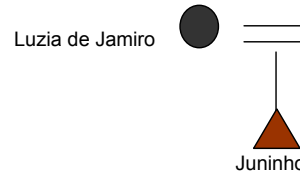
Casa 28



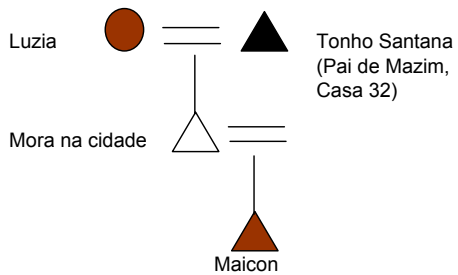
Casa 29



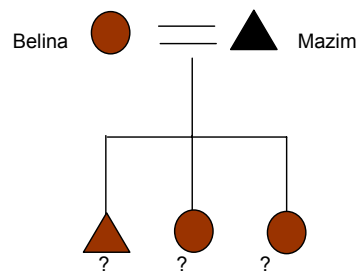
Casa 30



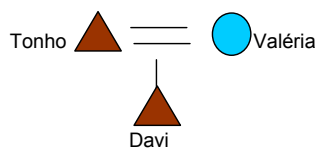
Casa 31



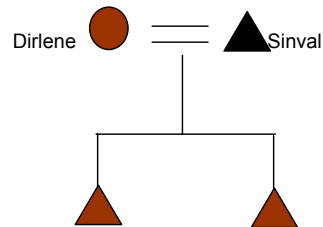
Casa 32



Casa 33



Casa 34



**Casa 35**

Teófilo  =  ?

Lucas

  
Bruno

Obs: Dos dezessete casamentos que aparecem nos diagramas que foram desfeitos, seja por separação ou falecimento, nove com Borum, quatro com indígenas de outras etnias e quatro com não-indígena.











eram

|